

TOYNBEE STUDIOS SPACE HIRE



Steve Whitson Studio

4th floor, 13m x 11.5m, capacity 80

Fully sprung dance floor with harlequin cover, barre & mirrored wall, panoramic views across East London.

£ Standard Rate £2340pw / £585 pd
Charity Rate £1500 pw / £375 pd



Studio 3

3rd floor, 15m x 14m, capacity 80

Large airy studio with views across East London, harlequin dance floor, full blackout available.

£ Standard Rate £1820pw / £455 pd
Charity Rate £1180 pw / £295 pd



Brick Room

2nd floor, meeting room, capacity 20

Flip chart, projector & screen, TV/DVD combi available subject to additional cost.

£ Standard Rate £200 (4 hrs) then £50 ph
Charity Rate £80 (min 4 hrs) then £20 ph



Court Room

1st floor, 15.5m x 7.5m, capacity 60

Atmospheric oak panelled walls, harlequin dance floor, small raised stage, lighting rig & full blackout available.

£ Standard Rate £1600pw / £400 pd
Charity Rate £920 pw / £230 pd

Your hire includes:

- wifi
- use of shared kitchen facilities
- admin facilities (may be subject to charge)
- use of shower room

Available upon arrangement:

- tables & chairs
- pianos
- AV equipment
- catering services from our Arts Bar & Café
- parking

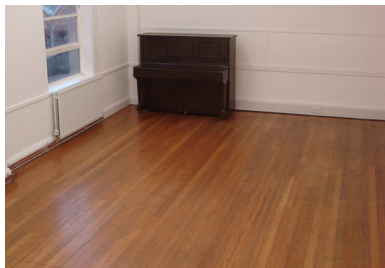


Fire Room

1st floor, 12m x 6m, capacity 50

Classroom style studio, harlequin dance floor, blinds on all windows.

£ Standard Rate £1100pw / £275 pd
Charity Rate £680 pw / £155 pd



Studio 5

1st floor, 8.5m x 4.5m, capacity 40

Classroom style studio, wooden floor, blinds on all windows.

£ Standard Rate £760pw / £190 pd
Charity Rate £360 pw / £90 pd



Theatre

Ground floor, 10m x 9m (stage), capacity 280 (+50 on stage)

1930s theatre with original art deco features. Fitted with a cinematic projector and screen, full lighting rig and PA system, the Theatre is available for conferences, performances, technical rehearsals and standard rehearsals. Technical support is available. **Prices are available on application.**

Our building is accessible. Get in touch if you have any questions around access.

Regular studio hours are 10am-6pm Mon-Fri. Hires outside of these hours are subject to additional duty management fees. Weekend surcharges apply to extended weekly hires.

Public events and filming are possible by negotiation at separate rates.

For details and/or to arrange a viewing, contact Jessica Denning on 020 7247 5102 or jessica@artsadmin.co.uk.

Artsadmin, Toynbee Studios, 28 Commercial Street, London E1 6AB

t 020 7247 5102 | w artsadmin.co.uk | @artsadmin

Registered company no. 2979487. Registered charity no. 1044645.

All prices EXCLUDE VAT. Charity rates apply to charities, non-profits & performing arts companies.



Supported using public funding by
**ARTS COUNCIL
ENGLAND**

ARTS ADMIN.